








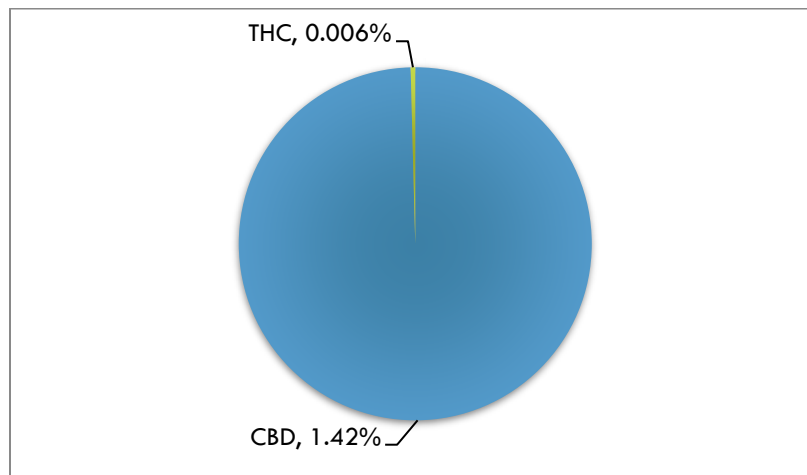


POTENCY REPORT

Material Tested: CBD Pen
Testing Method: UPLC-DAD
Date Tested: 01/26/2018
Batch Number: C0125830
Testing Analyst: Benjamin Dennis; Reviewed by: Jeremy Riggle, PhD
Total Product Mass: 6.5g

| ACIDIC COMPOUND mg/unit | | NEUTRAL COMPOUND mg/unit | |
|-------------------------|-------|--------------------------|---|
| CBDA | <0.1% | CBD | 1.42%  |
| THCA | <0.1% | THC | <0.1%  |
| CBCA | <0.1% | CBC | <0.1%  |
| CBGA | <0.1% | CBG | <0.1%  |
| CBNA | <0.1% | CBN | <0.1%  |
| THCVA | <0.1% | THCV | <0.1%  |
| CBDVA | <0.1% | CBDV | <0.1%  |

Cannabinoid Content (wt/wt)



Mary's Nutritionals, LLC is a wholly owned subsidiary of Mary's Medicinals, LLC. Information provided in this report is for CBD rich hemp cultivated by Elite Botanicals, Loveland CO.

